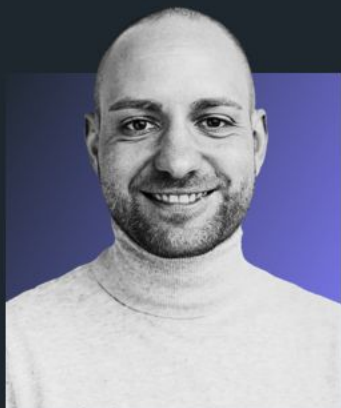




Test like a robot, monitor like a Bavarian



Sebastian Böhm

DevOps Engineer, it@M



Maximilian Sachmann

DevOps Engineer, it@M



About us



Landeshauptstadt
München
IT-Referat
it@M



Sebastian Böhm

- ◆ *DevOps Engineer*
- ◆ *Monitoring since 2016*
- ◆ *Checkmk user since 2022*



Maximilian Sachmann

- ◆ *DevOps Engineer*
- ◆ *Monitoring since 2020*
- ◆ *Checkmk user since 2022*

About it@M

IT service provider for the City of Munich



Landeshauptstadt
München
IT-Referat
it@M



1.350
Employees



1.099
Applications



6.300
Virtual servers



8
Sites



4.000+
Hosts
200.000+
Services



28+
Test cases

Checkmk #11
Conference

X



Road to Robotmk & Checkmk



Landeshauptstadt
München
IT-Referat
it@M

OSMC

*Simon presents
Robotmk at OSMC*

Migration

*Migrating infrastructure and
synthetic monitoring*

10/2021

Support End

*Development of E2E-Tool
discontinued & open source*

11/2021

2022

PoC

*Evaluate Checkmk &
Robotmk*

2023

Go-Live

*Switch to Checkmk
monitoring*

04/2024

Checkmk #11
Conference

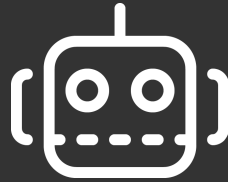
X



Reasons for Robotmk



Landeshauptstadt
München
IT-Referat
it@M



**Open source
framework**

**Strong
community**

**Variety
of
libraries**

**Human
friendly
syntax**

**Integration
in
Checkmk**

Checkmk #11
Conference

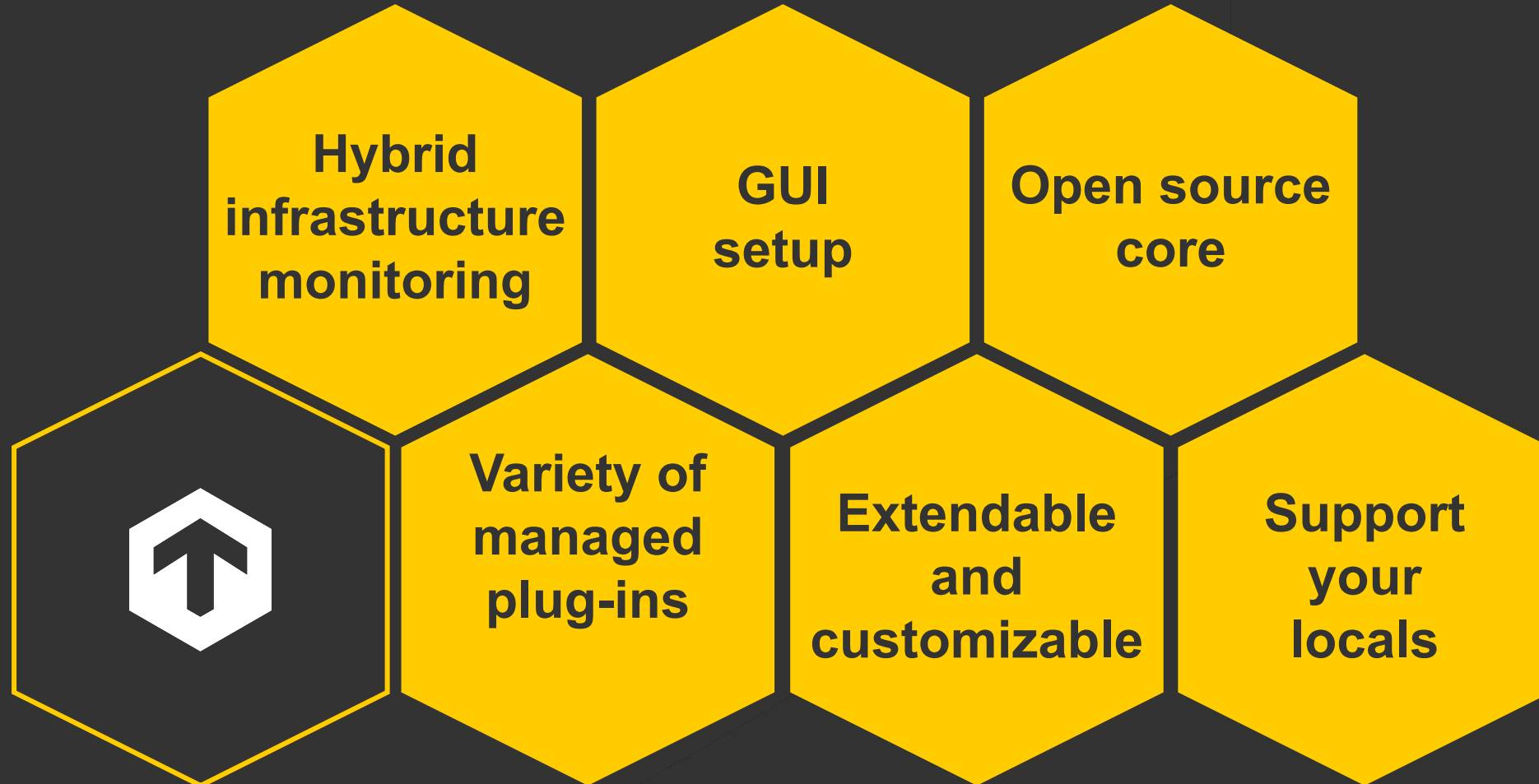
X



Reasons for Checkmk



Landeshauptstadt
München
IT-Referat
it@M



Checkmk #11
Conference

X



Goals with Robotmk



Landeshauptstadt
München
IT-Referat
it@M

**Monthly
availability
report**



**End-to-End
monitoring**

Checkmk #11
Conference

X



Usage of Robotmk

Municipal waste management




- Very frequently visited website
- Information on garbage collection/disposal
- Collection calendar

Leerungstermine

Kellerstr. 27

Zeitraum auswählen

Woche 15 vom 07.04.2025 bis 13.04.2025 ▼

Tag	Datum	Abfallart
Montag	07.04.2025	
Dienstag	08.04.2025	
Mittwoch	09.04.2025	
Donnerstag	10.04.2025	 Restmülltonne
Freitag	11.04.2025	
Samstag	12.04.2025	 Papiertonne  Geänderter Leerungstermin
Sonntag	13.04.2025	



Jahreskalender 2025 als PDF



Download ICS-Datei 2025 für Ihren Kalender

Usage of Robotmk

Child daycare finder

- Searching and booking a childcare place
- Application for processing the incoming requests

The screenshot shows the 'kita finder' website header with the logo and the text 'Landeshauptstadt München Referat für Bildung und Sport'. Below the header is a navigation bar with links: 'Startseite', 'Einrichtungssuche', and 'FAQ'. The main content area features a search form titled 'Jetzt Ihren Kita-Platz suchen!'. The form includes the following fields and controls:

- Gewünschter Betreuungsbeginn**: A date input field with the example 'z.B.: 01.06.2025', a clear button (X), and a calendar icon.
- Geburtsdatum Ihres Kindes**: A date input field with the example 'z.B.: 01.01.2017', a clear button (X), and a calendar icon.
- Adresse / bei Schulkindern der Schule**: A text input field with the placeholder 'Straße, PLZ, Ort' and a back arrow icon.
- Standort (Automatische Ermittlung)**: A checkbox with a target icon.
- Suchen**: A large orange button at the bottom of the form.

Usage of Robotmk

Municipal service center

- Booking appointments
- Managing appointments
- Visitor displays

Bürgerbüro Ruppertstraße

🕒 Herzlich Willkommen

Nummer / Number	Tisch / Desk
125764	506
151762	514
112460	524

Usage of Robotmk

Availability Report

- Test Cases running 24/7
- Availability during SLA
- Monthly reporting of availability
- Highlight lower availability

Verfuegbarkeitsreport

Report erstellt am: 02.05.2025

Zeitraum: April 2025 - von 01.04.2025 bis 01.05.2025

Servicezeiten:

Mo, Mi, Do: 06.30 - 17.00 Uhr

Di: 06.30 - 19.00 Uhr

Fr: 06.30 - 15.00 Uhr

Service

RMK awm_awm Test: /Internetauftritt: AWM

RMK kitafinder_kitafinder Test: /Tasks: Kita Backend

RMK kitafinder_kitafinder Test: /Tasks: Kitafinder

Summary

Availability levels:

OK > 99.000% **Warning** > 98.000% **Critical** <= 98.000%

Workflow



Landeshauptstadt
München
IT-Referat
it@M



**local
development**

**dev
pipeline**

**master
pipeline**

**agent
rule**

Checkmk #11
Conference

X

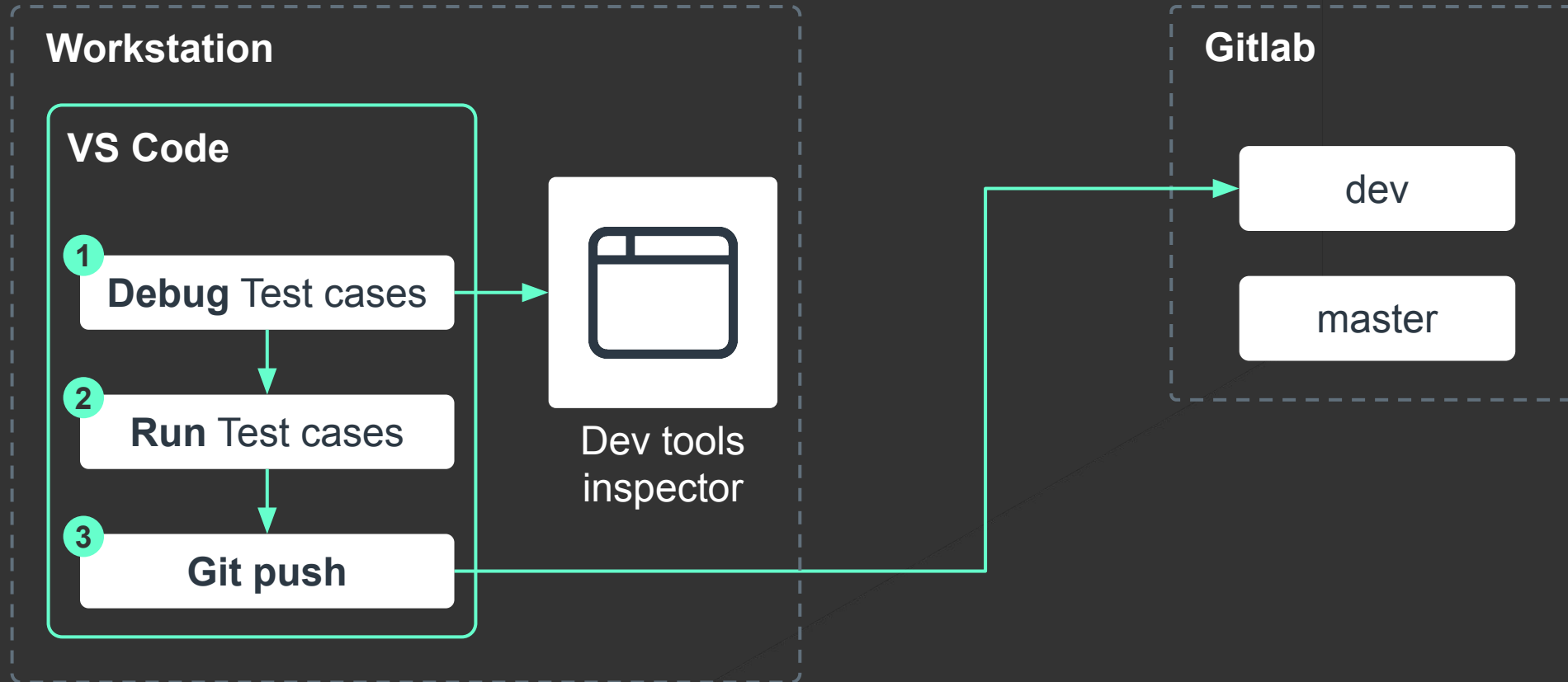


Workflow

Local development



Landeshauptstadt
München
IT-Referat
it@M

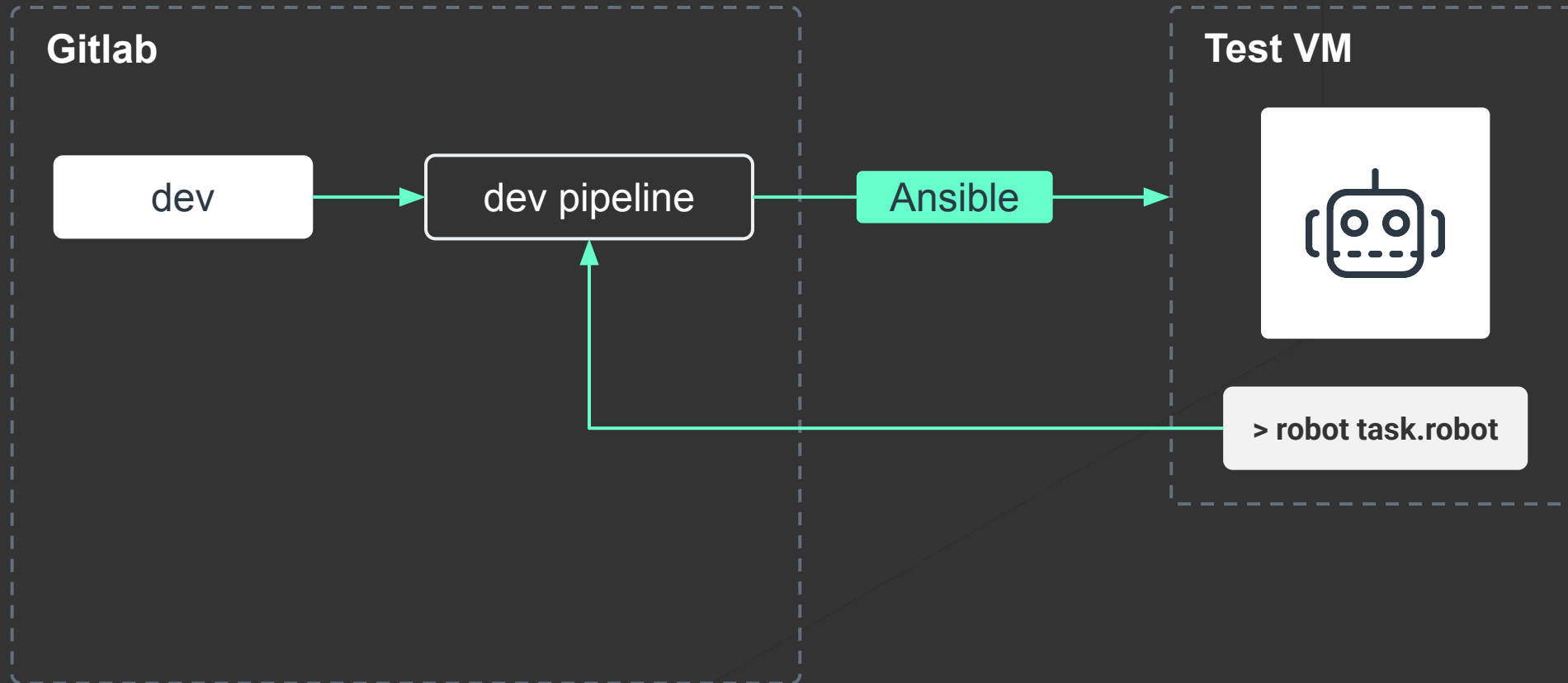


Workflow

Dev pipeline



Landeshauptstadt
München
IT-Referat
it@M



Checkmk #11
Conference

X

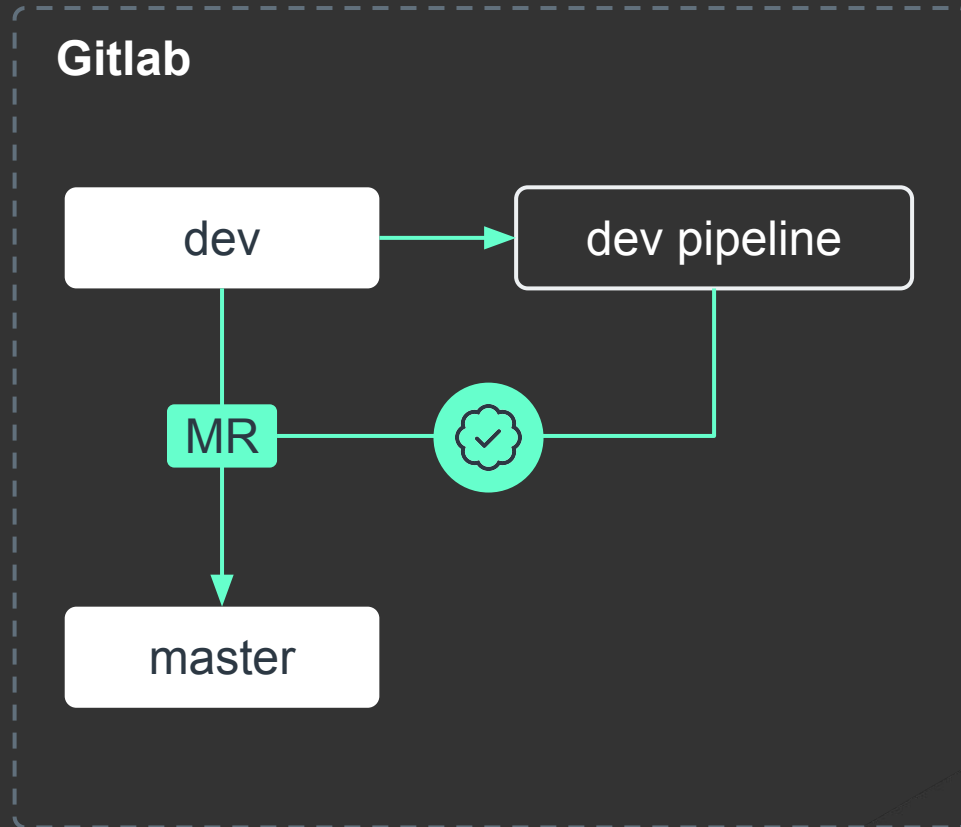


Workflow

Dev pipeline



Landeshauptstadt
München
IT-Referat
it@M



Checkmk #11
Conference

X

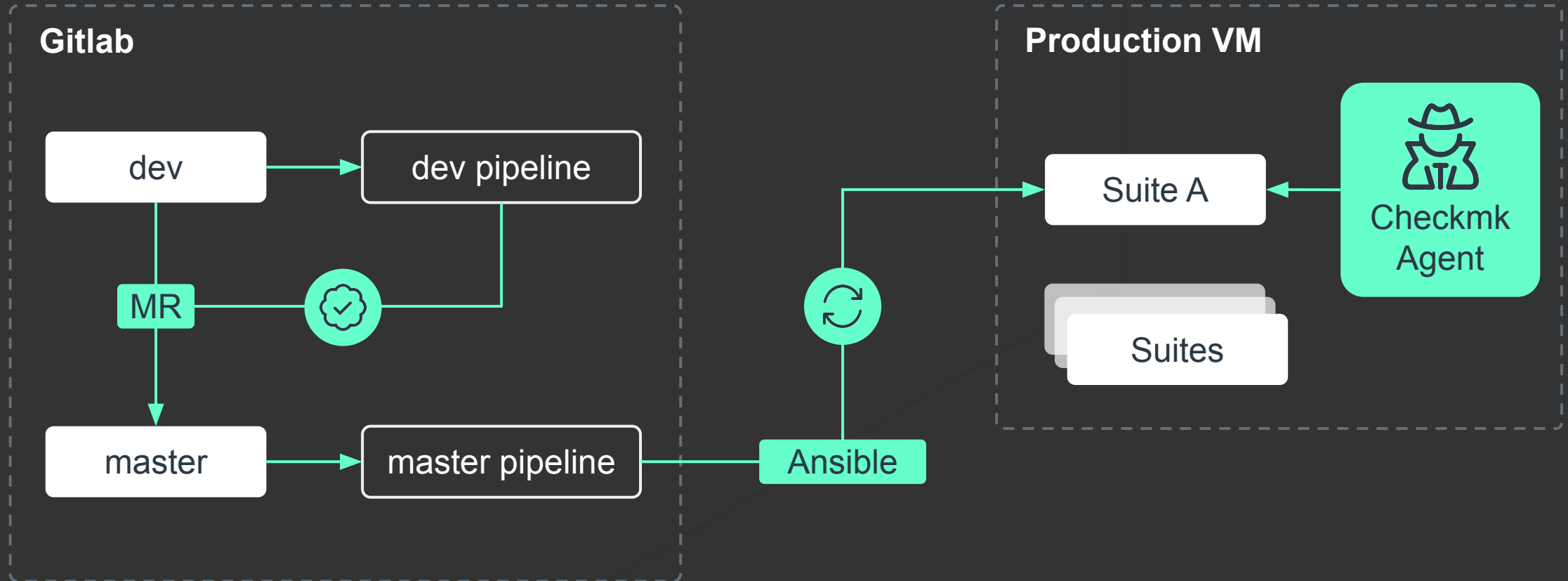


Workflow

Master pipeline



Landeshauptstadt
München
IT-Referat
it@M



Checkmk #11
Conference

X



Workflow

Agent Rule

- Parallel and sequential execution
- Execution times

Deploy Robotmk scheduler and agent plug-in ▾

Base directory of Robot Framework projects (required)

C:\monitoring\robot\master

Parallel plan groups (required)

Group execution interval

0 hours 5 mins 0 secs

Sequential plans (required)

Application name (required)

Suite A

Variant

Relative path to test suite file or folder (required)

suite_a

Execution configuration

Limit per attempt

0 hours 1 mins 0 secs

Robot Framework re-executions

No re-executions ▾

⌵ × Automated environment setup (via RCC)

Relative path to robot.yaml (required)

environments\browser_only\robot.yaml

Environment build timeout

10 mins 0 secs

Robot Framework parameters

Execute plan as a specific user

Assign plan/test result to piggyback host

Cleanup of working directory

By age of Robotmk executions ▾

Maximum age 14 days 0 hours

Workflow

Agent Rule

- Parallel and sequential execution
- Execution times
- Central environment config

Deploy Robotmk scheduler and agent plug-in ▾

Base directory of Robot Framework projects (required)
C:\monitoring\robot\master

Parallel plan groups (required)
Group execution interval
0 hours 5 mins 0 secs

Sequential plans (required)
Application name (required)
Suite A

Variant
Relative path to test suite file or folder (required)
suite_a

Execution configuration
Limit per attempt
0 hours 1 mins 0 secs

Robot Framework re-executions
No re-executions ▾

⌵ × ⌵ × × Automated environment setup (via RCC)
Relative path to robot.yaml (required)
environments\browser_only\robot.yaml

Environment build timeout
10 mins 0 secs

☐ Robot Framework parameters
☐ Execute plan as a specific user
☐ Assign plan/test result to piggyback host

Cleanup of working directory
By age of Robotmk executions ▾
Maximum age 14 days 0 hours

Workflow

Agent Rule

- Parallel and sequential execution
- Execution times
- Central environment config
- Assign explicit host

Deploy Robotmk scheduler and agent plug-in ▾

Base directory of Robot Framework projects (required)
C:\monitoring\robot\master

Parallel plan groups (required)
Group execution interval
0 hours 5 mins 0 secs

Sequential plans (required)
Application name (required)
Suite A

☐ Variant
Relative path to test suite file or folder (required)
suite_a

Execution configuration
Limit per attempt
0 hours 1 mins 0 secs

Robot Framework re-executions
No re-executions ▾

⌵ × Automated environment setup (via RCC)
Relative path to robot.yaml (required)
environments\browser_only\robot.yaml

Environment build timeout
10 mins 0 secs

☐ Robot Framework parameters
☐ Execute plan as a specific user
☐ Assign plan/test result to piggyback host

Cleanup of working directory
By age of Robotmk executions ▾
Maximum age 14 days 0 hours

Daily issues & solutions



Landeshauptstadt
München
IT-Referat
it@M



Downtimes



Explanations and instructions



Selectors



Be creative and precise



Expect the unexpected



Quality assurance

Checkmk #11
Conference

X





Landeshauptstadt
München
IT-Referat
it@M



Sebastian Böhm



Thank you!

Questions?



Maximilian Sachmann



Checkmk #11
Conference

X



